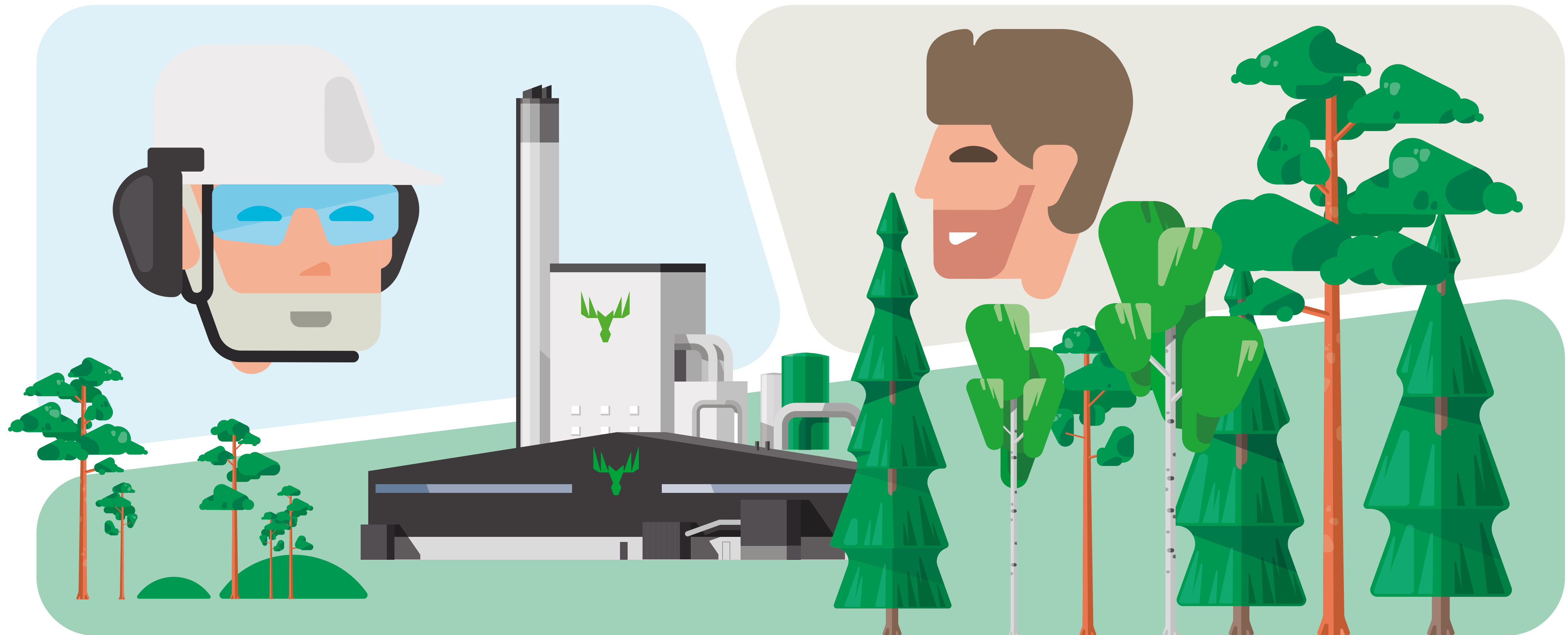


HAVE A SAFE VISIT

Safety guide for visitors
Metsä Fibre Renko



Welcome to the Renko sawmill!

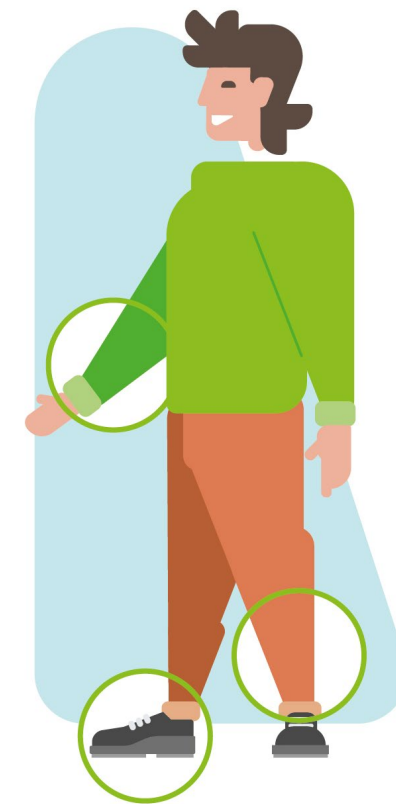
Safety is key priority for us in everything we do and an important professional skill. Our goal is for everyone to head home healthy.

BEFORE THE VISIT

Before the visit, please registrate to mill site by filling the access request form at <https://gates.metsagroup.com>

Use the request type "Visitors" and the contact person for the application is automatically the Securitas service center. In the additional information field, fill the mill representative with whom the visit has been agreed.

Once you have submitted the visit request, it will be sent automatically to security and contact person of the mill.



For safety reasons, we kindly ask that visitors to the mill wear long-sleeved and long-legged clothing, as well as low-heeled shoes.

Our goal is zero accidents.

WHEN YOU ARRIVE

The address of the sawmill is Sahantie 50, Renko.

Take road number 10 (Turku Highway) and follow the sawmill signs.

When you arrive, park in the parking area visitor spots next to the pedestrian gate and inform the mill's contact person by phone.

Your contact person will pick you up from the gate or give you further instructions.

DURING THE VISIT

Please follow these guidelines to ensure a safe and smooth visit. The mill's representative will give you more information.



Stay with your host throughout the visit. In case of emergency, follow your host's instructions.



Hold on to the railings when you move on the stairs and focus on walking.



In case of fire alarms or other emergencies, follow the instructions of the mill representative.



Taking photos or videos without permission is prohibited. The area has recording camera surveillance.



Alcohol and other drugs are prohibited, as well as being under the influence of drugs.



The use of tobacco products is forbidden in the mill area.



Professionals
put safety first

METSÄ FIBRE

Rengon saha

Sahantie 50

14300 RENKO

www.metsafibre.com