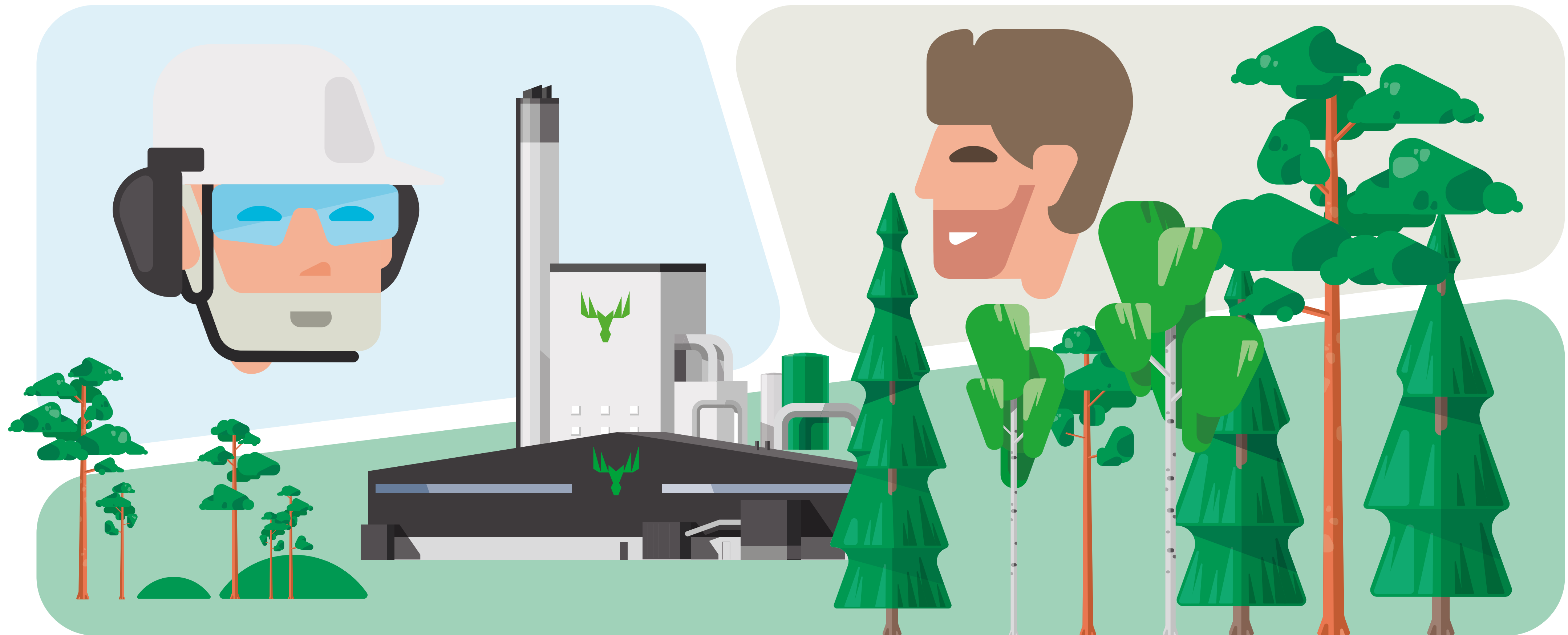


HAVE A SAFE VISIT

Safety guide for visitors
Metsä Fibre Vilppula



Welcome to Vilppula sawmill!!

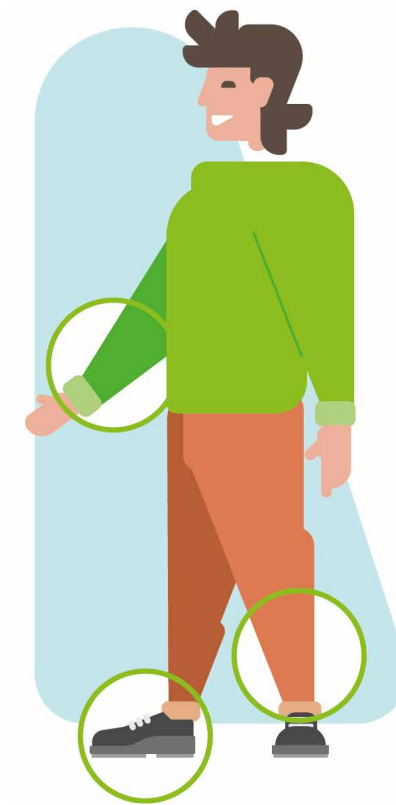
Safety is key priority for us in everything we do and an important professional skill. Our goal is for everyone to head home healthy.

BEFORE THE VISIT

Before the visit, please registrate to mill site by filling the access request form at <https://gates.metsagroup.com>

Use the request type "Visitors". The contact person at the mill is the person who will serve as the host.

Once you have submitted the visit request, it will be sent automatically to security and contact person of the mill.



For safety reasons, we kindly ask that visitors to the mill wear long-sleeved and long-legged clothing, as well as low-heeled shoes.

Our goal is zero accidents.

WHEN YOU ARRIVE

The address of the sawmill is Sahantie 16, Mänttä-Vilppula.

Take road number 58. Turn to Vilppula (road number 348) and follow the Metsä signs.

When you arrive, park in the parking area and inform the mill's contact person by phone.

Your contact person will pick you up from the gate or give you further instructions.

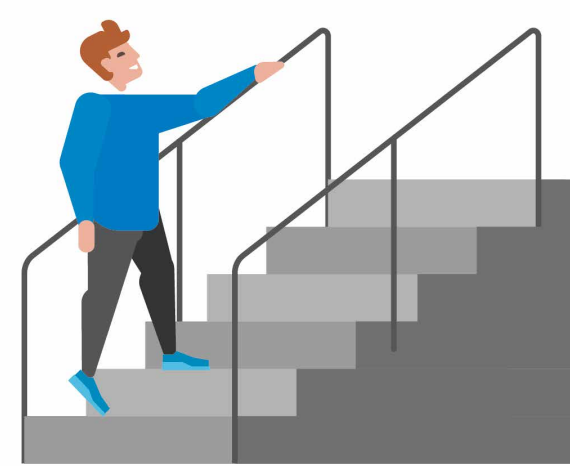
DURING THE VISIT

Please follow these guidelines to ensure a safe and smooth visit.

The mill's representative will give you more information.



Stay with your host throughout the visit. In case of emergency, follow your host's instructions.



Hold on to the railings when you move on the stairs and focus on walking.



In case of fire alarms or other emergencies, follow the instructions of the mill representative.



Taking photos or videos without permission is prohibited. The area has recording camera surveillance.



Alcohol and other drugs are prohibited, as well as being under the influence of drugs.



The use of tobacco products is forbidden in the mill area.

SAFE SHOES FOR THE VISIT

When visiting our production facilities, you will be provided with all necessary protective equipment. However, we ask that you arrive wearing appropriate, safe shoes. Safe shoes are closed-toe, low and wide-heeled, or completely flat. Please also be prepared to walk up several stairs and grating platforms during the visit.



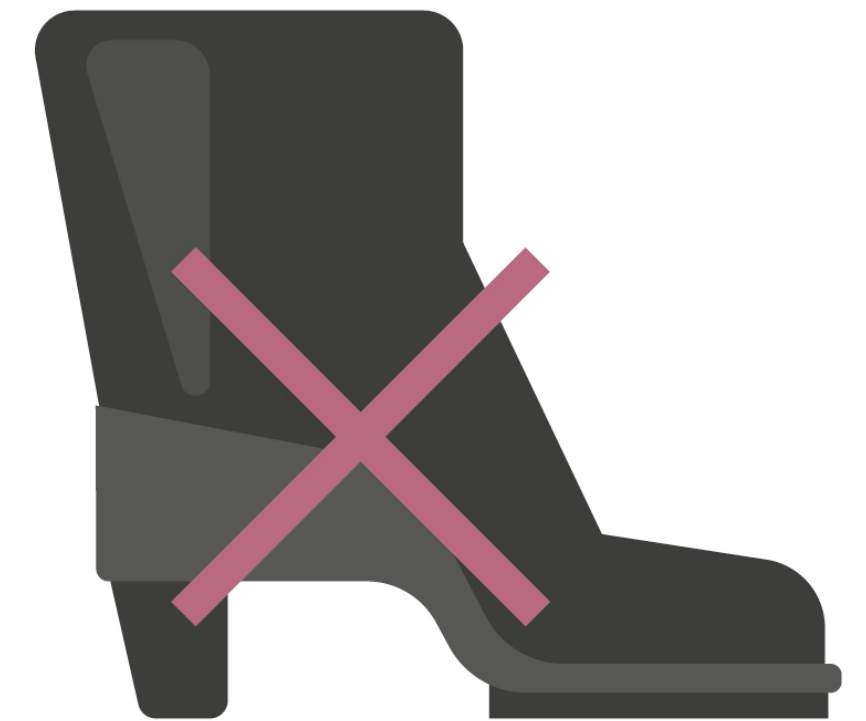
Not closed enough



Wedge heel



Too narrow and/or high heel





Professionals
put safety first

METSÄ FIBRE
Vilppulan saha
Sahantie 16
35700 VILPPULA

www.metsafibre.com